

Picture Series Peephole Lock——YuTismt

Product Instructions

User Manual

Thank you very much for purchasing the fully automatic smart lock! To ensure your safe use of this product and to extend its lifespan, please read this instruction manual carefully before using this product and keep it properly.

Thank you for choosing our products!

To help you use the fully automatic smart lock product (hereinafter referred to as "this product") correctly, please read this instruction manual carefully before installing and using this product for the first time.

Please consult the seller of the product for the actual specifications and configurations of the products described in this manual. If you fail to operate according to the instructions in the manual, or let a technician other than our company repair or change this product, we will not assume any responsibility for the damage caused.

The graphics and charts in this manual are for illustrative purposes only, and may differ from the actual product. The actual specifications and configuration of the product may change as needed, so it is different from the content of this manual. Please refer to the actual product.

In order to provide better service, the products and contents described in this manual may be updated, improved or modified at any time without prior notice.

If you find that the actual situation of this product is inconsistent with this manual during use, or if you have any questions, please call for consultation.

1.Setting Description

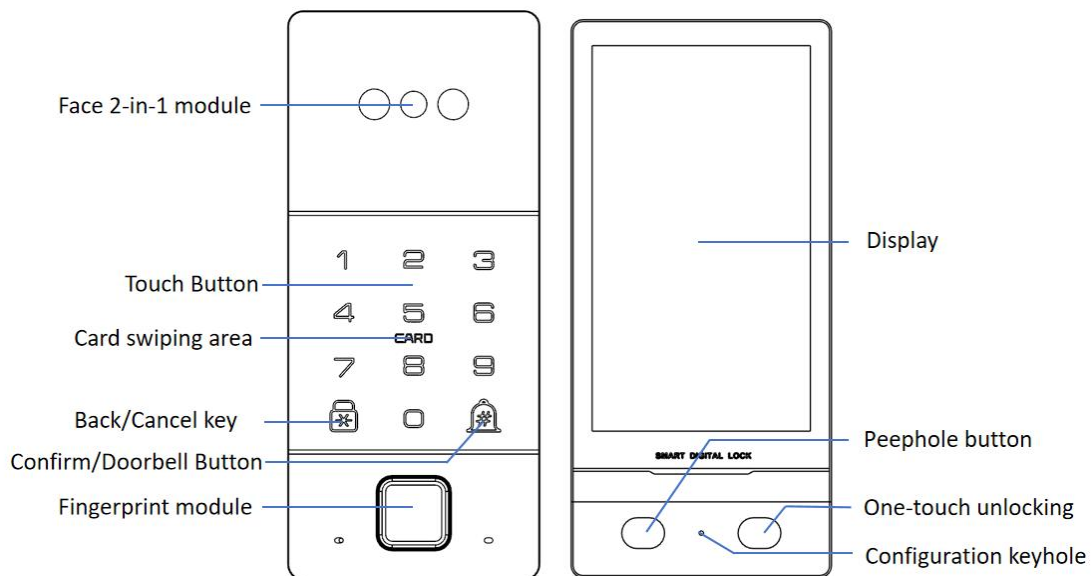
1.1 Overview

This product has a hierarchical authority management function. The system divides user types into: management users, ordinary users and time-limited users. In addition to the right to open the door, the administrator has the right to add, delete and set management permissions.

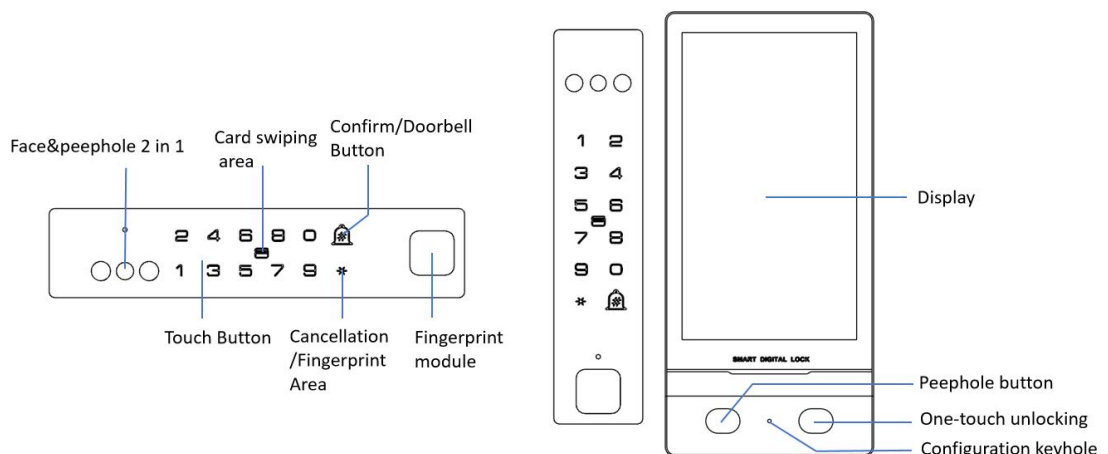
Ordinary users and time-limited users only have the right to open the door. The password of the time-limited user can be generated on the mobile phone App through the administrator password and is valid for unlocking within the specified time. Up to 100 passwords, 50 cards, or 50 semiconductor fingerprint templates can be stored, and 20 face recognitions can be recognized. Up to 500 unlocking records can be stored. If the user enters the wrong password, fingerprint or card 5 times in a row, The system will lock for 120 seconds.

1.2 Product Simple Picture

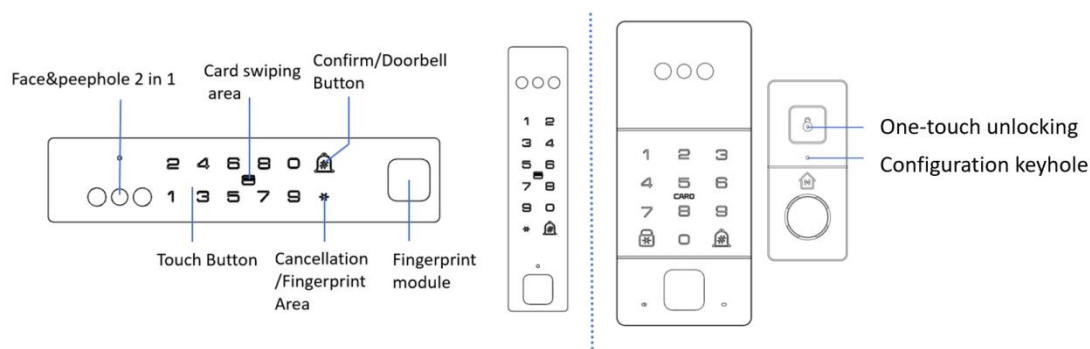
Embedded with screen



Handle Version with Screen



Screen-less Bluetooth Version

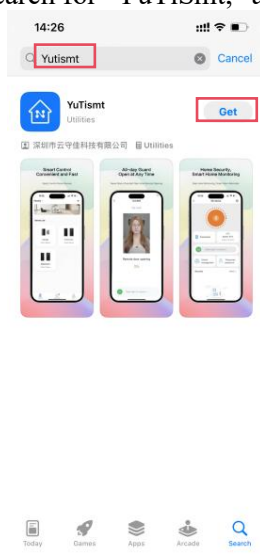


2.App Usage

2.1 App Download

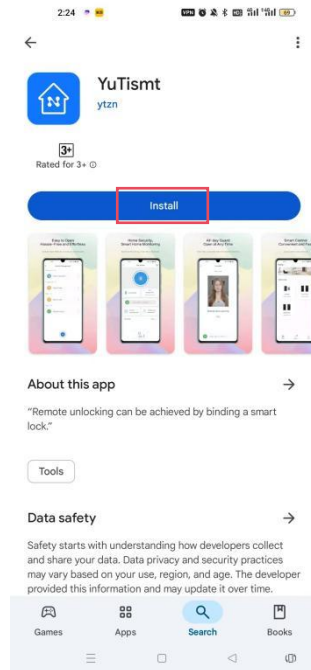
◆ IOS Download

Open the App Store on your phone, search for "YuTiSmt," and tap Download/Get.



◆ Google Download

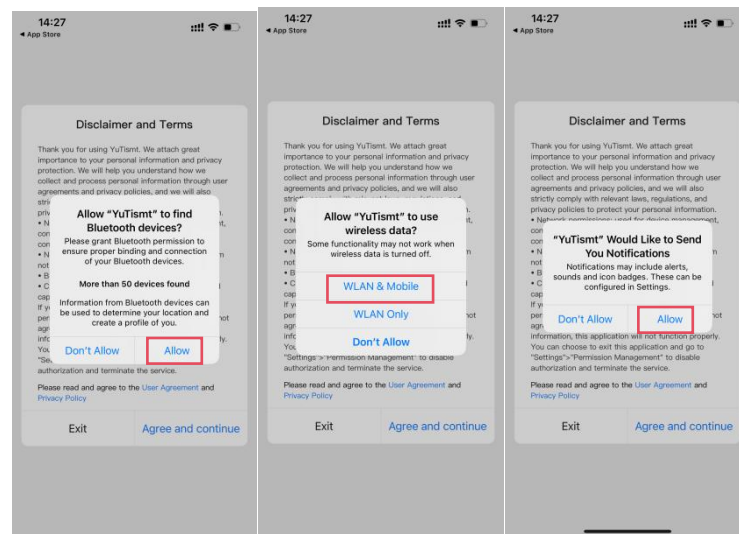
Open the Google Store on your phone, search for "YuTiSmt," and tap Download/Get.



2.2 App Program Usage

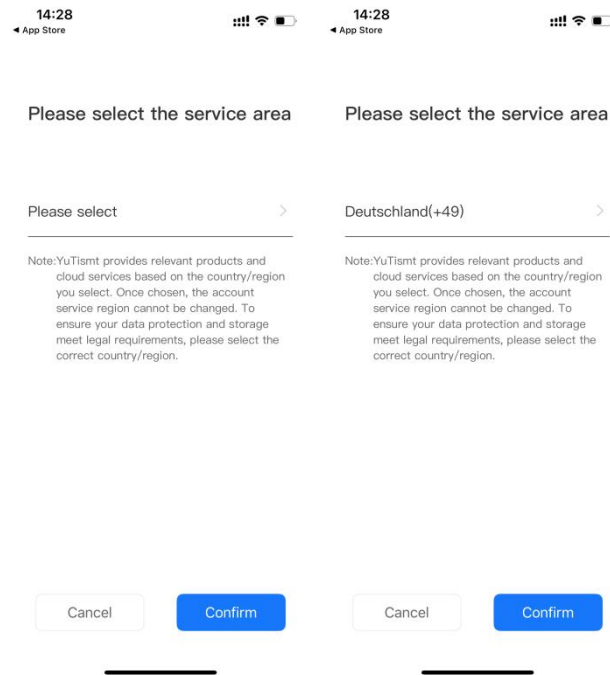
2.2.1 Authorized Use

The first time you use the App, you need to authorize the following permissions. Please open them all.



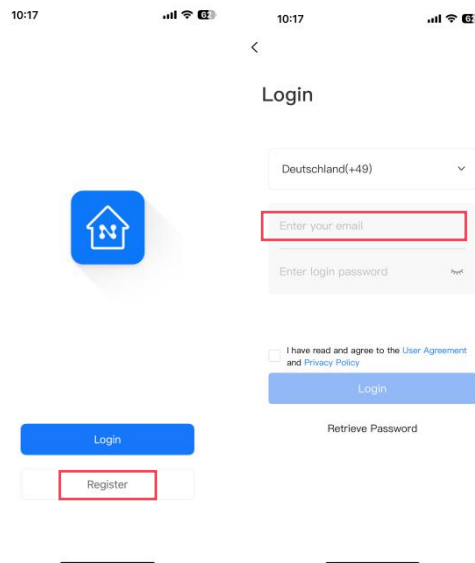
2.2.2 Region Selection

After authorization is complete, select your current region.



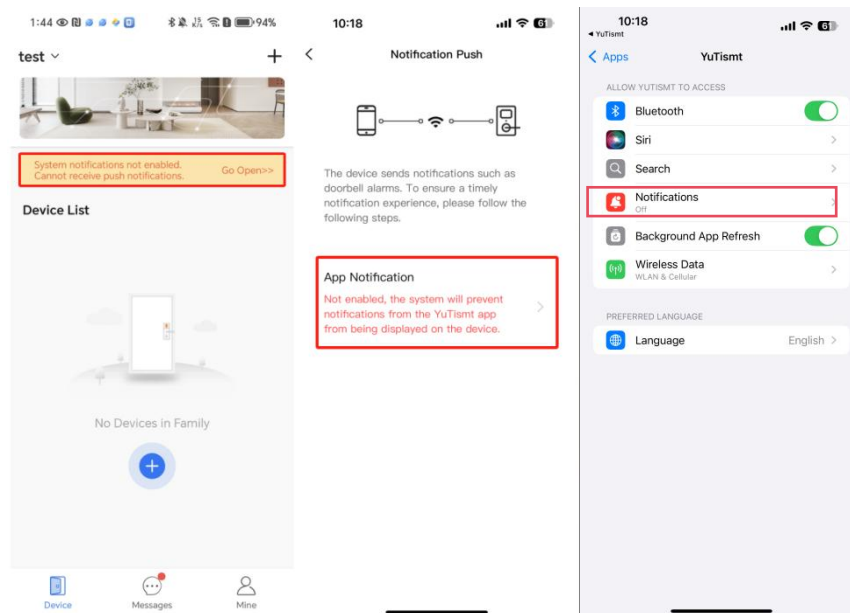
2.2.3 Email login/registration

Select Login/Register and follow the corresponding operation to register/login.



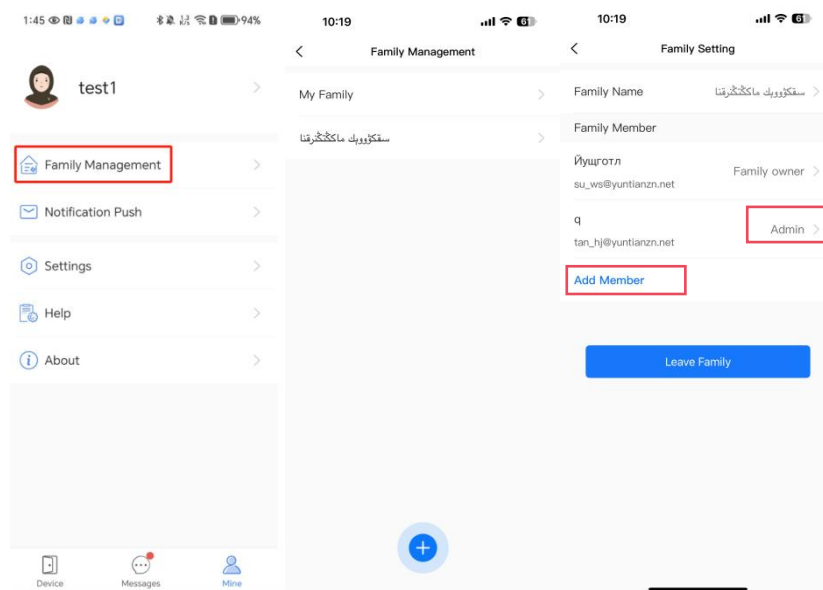
2.2.4 Notification Management

After logging in and entering the main page, click "System Notification" on the main page, then click App Notification, and then make sure the notification is "On" to ensure that the phone can receive notification messages in time.



2.2.5 Family Management

On the main page, navigate to the "Mine" interface, then enter "Family Management", select the family you want to operate, and then you can add, delete, and change family members.

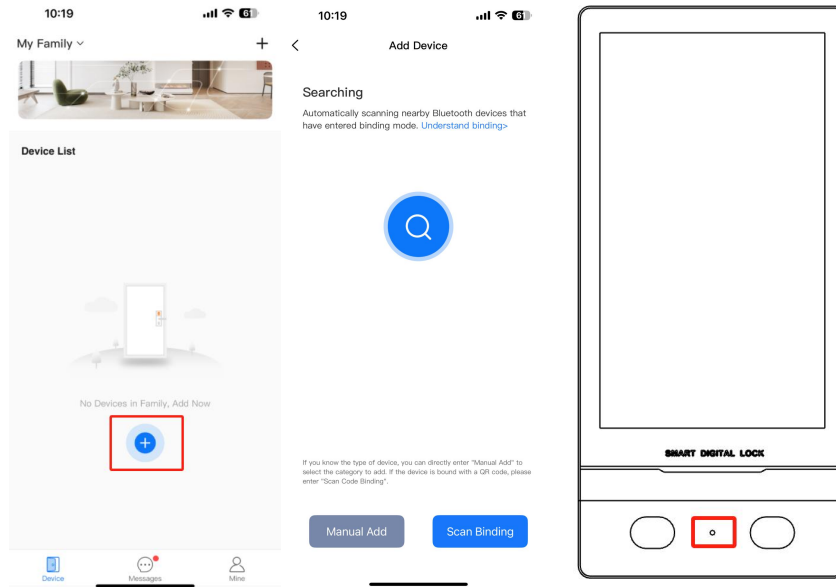


3.System panel usage

3.1 Device Binding

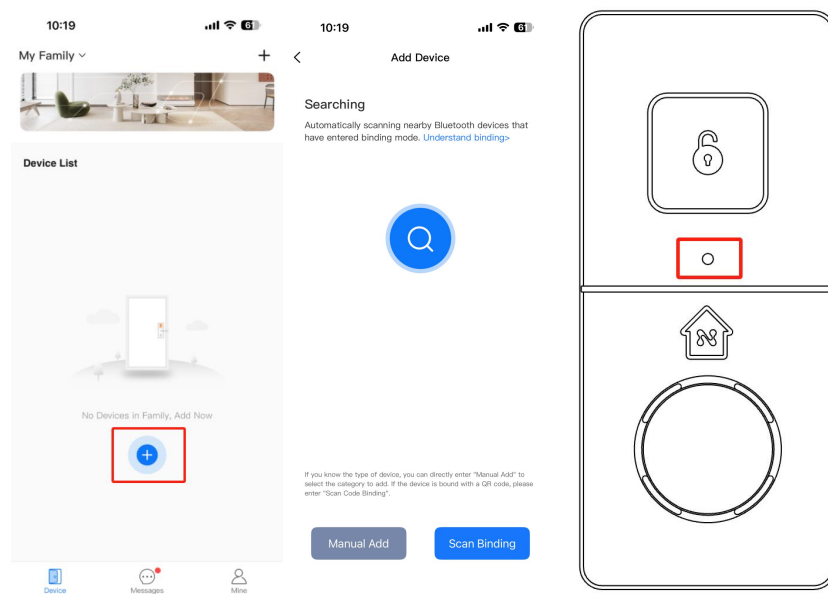
3.1.1 (Embedded with screen/Handle Version with Screen) Door control system binding

Open the App and click the "+" sign in the middle to let the App enter the network configuration mode. Then use the card pin to hold the small hole in the middle of the button and wait for the panel to "beep" 5 times before entering the mobile phone connection mode.



3.1.2 (Screenless Bluetooth Version) Door control system binding

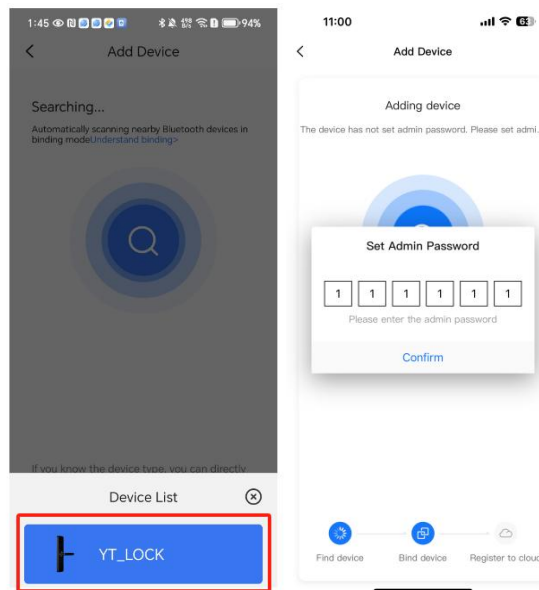
Open the App and click the "+" sign in the middle to let the App enter the network configuration mode. Then use the card pin to hold the small hole in the middle of the button and wait for the panel to "beep" 5 times before entering the mobile phone connection mode.



3.1.3 (Embedded with screen/Handle Version with Screen/Screenless Bluetooth Version) Set the administrator password (The password is unique and cannot be deleted/changed)

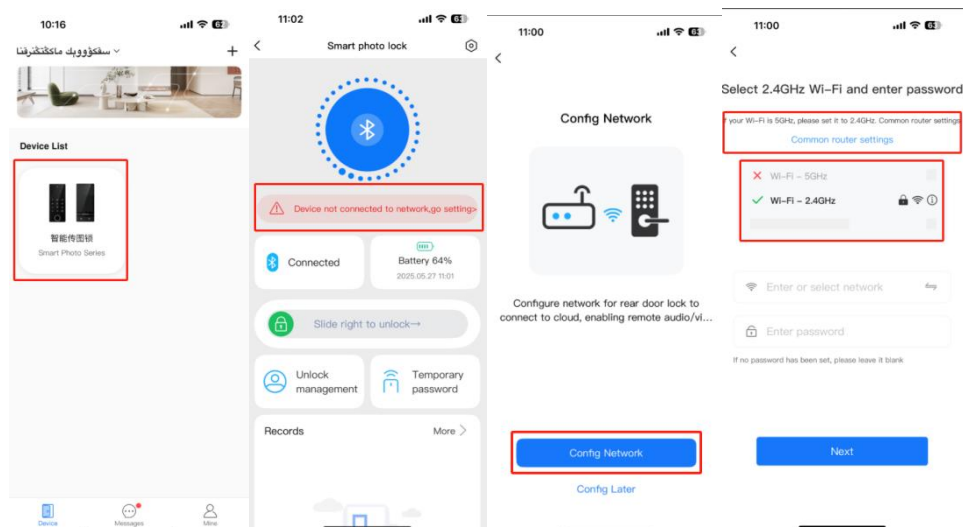
After entering the mobile phone connection mode, the mobile phone interface will pop up the binding device. Click the pop-up device and wait for the mobile phone and door control system to connect. If the connection is successful, you will be prompted to set the administrator password. After entering the password, the system panel is successfully bound to the mobile phone (the

password needs to be set within 1 minute, and it needs to be bound again after the timeout.)



3.1.4 Configure the network. Currently the network only supports 2.4G/Hz non-operator router network

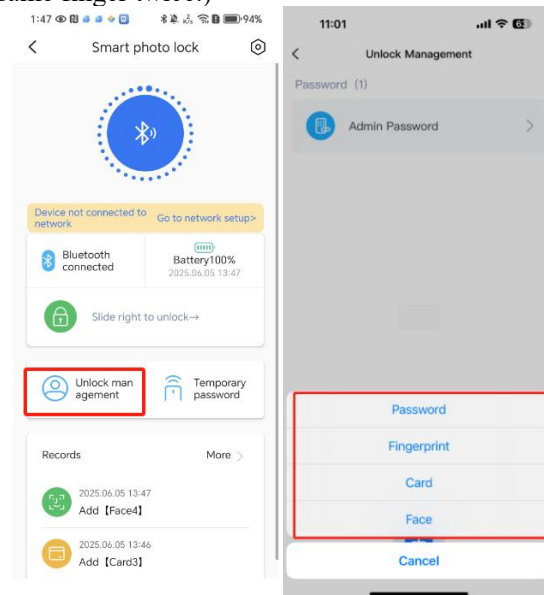
After setting up the administrator, you can configure the network or choose to skip. After escaping, you need to enter the network configuration on the device interface



3.2. Unlocking method added

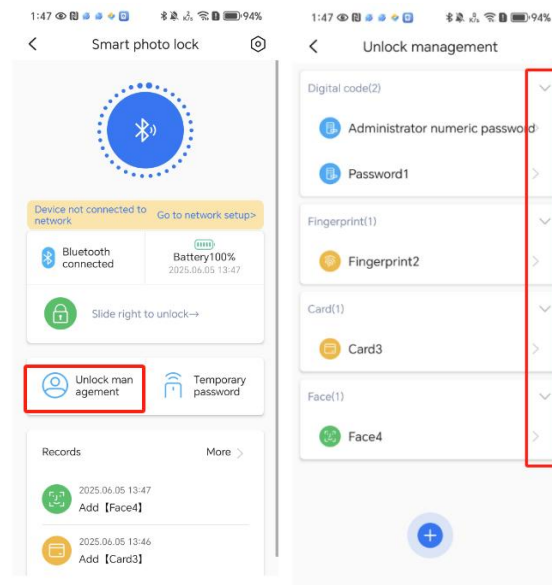
3.2.1 (Embedded with screen/Handle Version with Screen/Screenless Bluetooth Version) Unlocking method added

Enter the device home page, enter the unlocking management, then click the "+" in the middle of the screen to select the unlocking method you want to add, and then add the unlocking method (there is a voice prompt for the unlocking method, follow the voice prompts. Note: When entering the fingerprint, try to cover the fingerprint surface. If the fingerprint surface is shallow, it is recommended to enter the same finger twice.)



3.2.2 Delete unlocking methods. Except for the administrator password entered at the beginning, other unlocking methods can be deleted.

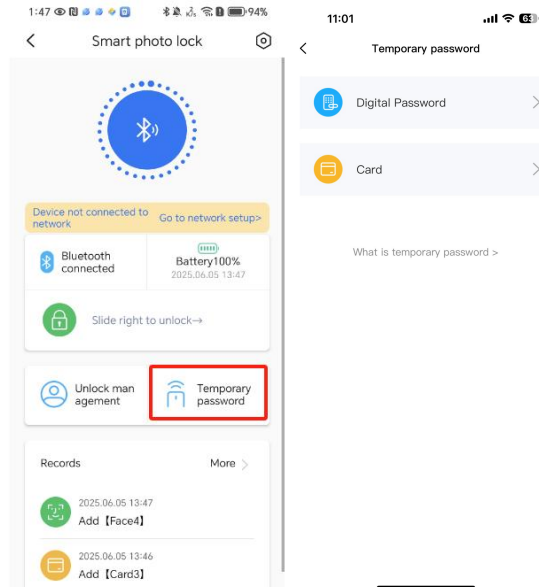
Enter the device home page and select the unlocking method you want to delete in the unlocking management.



3.3. Device expansion function

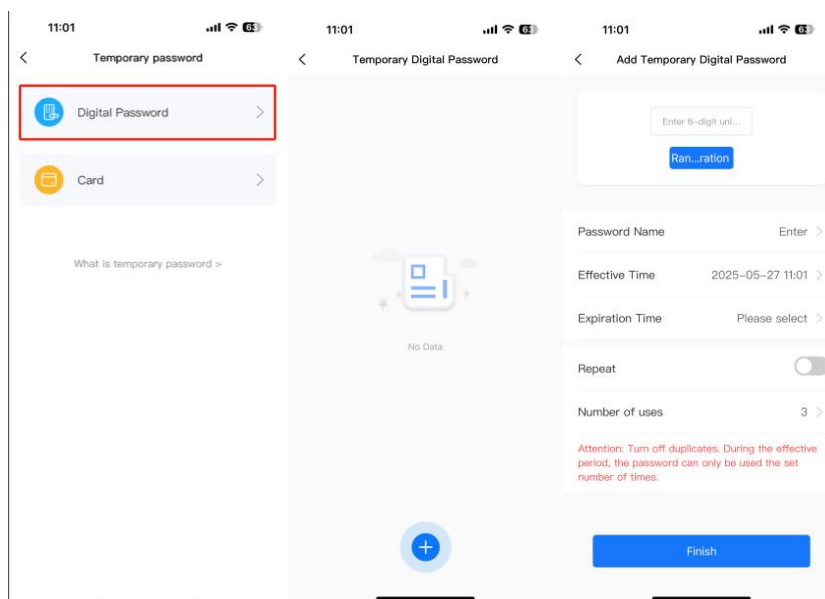
3.3.1 Temporary password (Embedded with screen/Handle Version with Screen/Screen less Bluetooth Version)

Go to the main page of settings and click on temporary password.



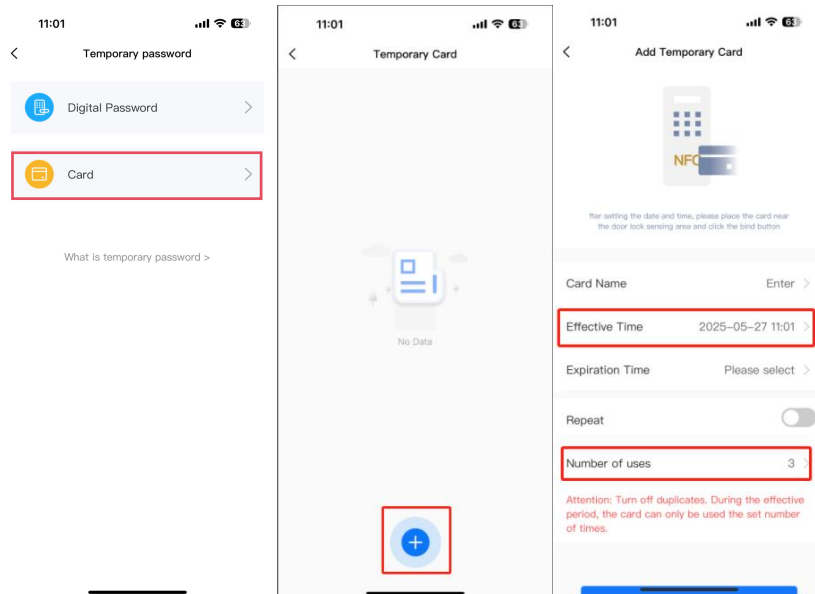
3.3.1.(a) Temporary password

Click the digital password on the temporary password interface, and click the "+" sign to add a temporary digital password. (Enter the required password, time, and number of unlocks.)



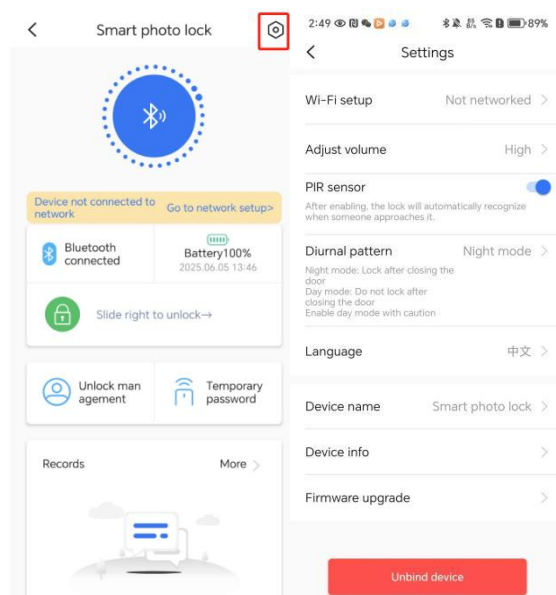
3.3.1.(b) Temporary door card

Click the door card in the temporary password interface, and click the "+" sign to add a temporary door card (Enter the required time and number of unlocks.)



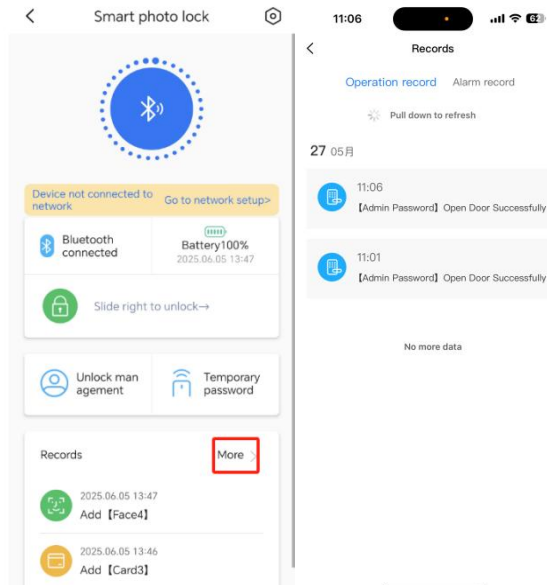
3.3.2 Setting information (Embedded with screen/Handle Version with Screen/Screen less Bluetooth Version)

Enter the settings and click the gear button in the upper right corner to enter the settings information, where you can adjust the volume, view device information, firmware version/upgrade and change the device name.



3.3.3 Unlock record (Embedded with screen/Handle Version with Screen/Screen less Bluetooth Version)

Tap "More" on the device homepage to view previous unlock records. (Up to 500 records)

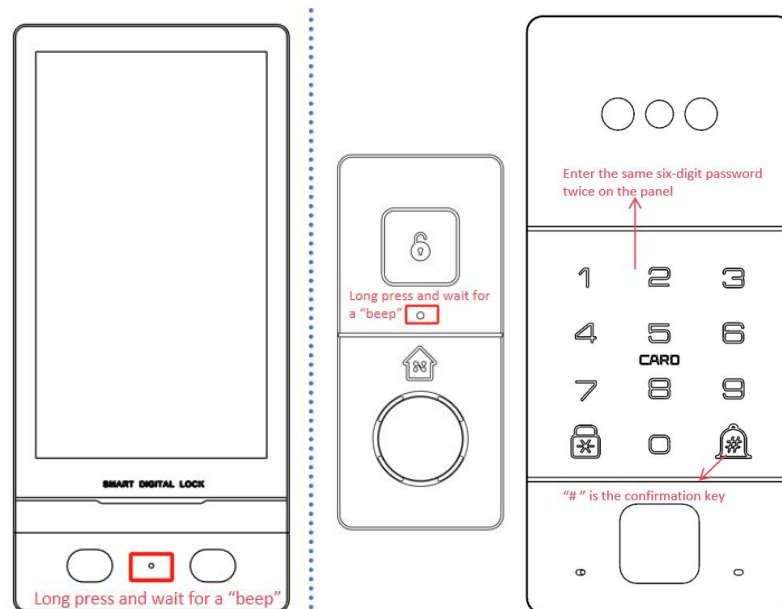


4. Local Setting

4.1 Enter local setting

4.1.1 First time setting

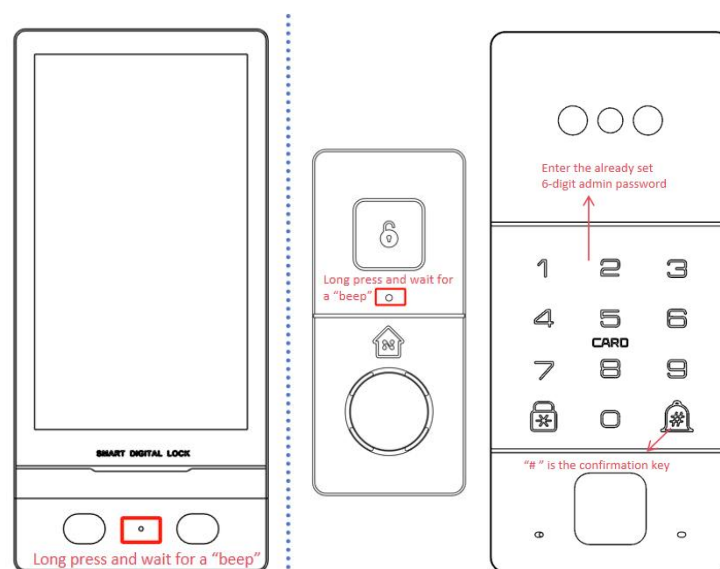
Press and hold the configuration keyhole until you hear a "beep", wait for the system to announce "please set the administrator password", please set the first 6-digit password and press the "#" key to confirm, then set the second 6-digit password that is the same as the first.



4.1.2 Already have system password to enter local

Press and hold the configuration keyhole, wait for a beep and then for the system to announce "please verify the administrator password". Enter the 6-digit administrator password you have set

and press the "#" key to confirm.



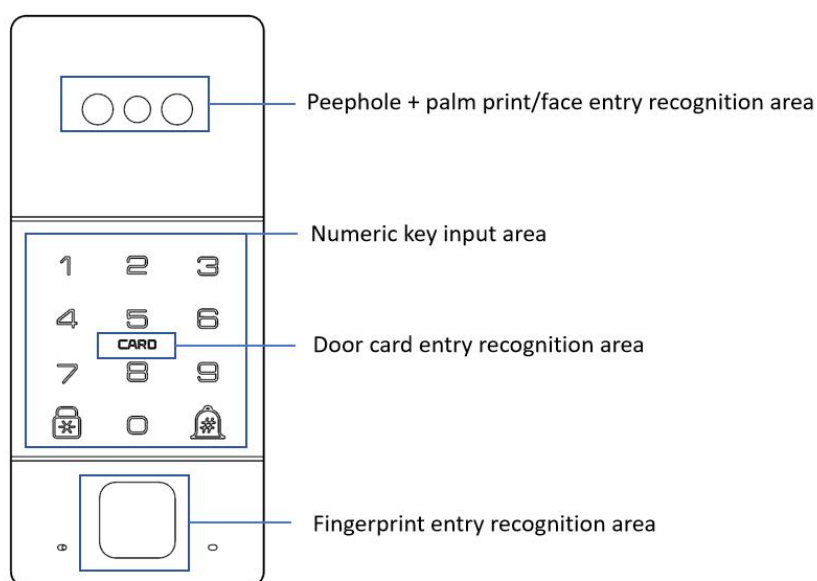
4.2 Local Operation Guide

4.2.1 Add unlocking method (Unlocking method is sorted in order, there may be some deviations from the actual object, please refer to the actual object for details.)

After entering the local settings, wait for the voice broadcast "1-Add user", "2-Delete user", "3-System settings",

Select 1 to enter the "Add user", and wait for the system to broadcast. After "1-Add password", "2-Add fingerprint", "3-Add IC card", "4-Add face/add palm print",

Select the unlocking method you need to enter and enter the entry.

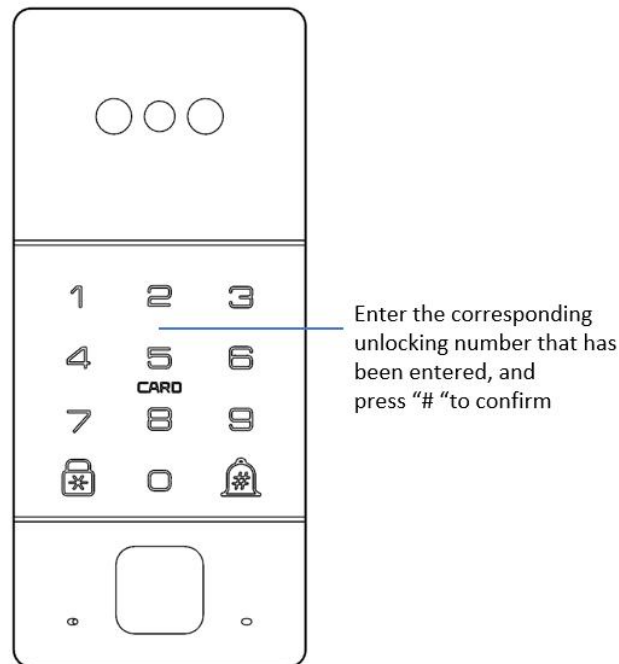


4.2.2 Delete unlock method

After entering the local settings, wait for the voice broadcast "1-Add user", "2-Delete user", "3-System settings" and then enter 1, and then it will prompt "1-Delete by number", "2-Verify user deletion", "3-Delete all"

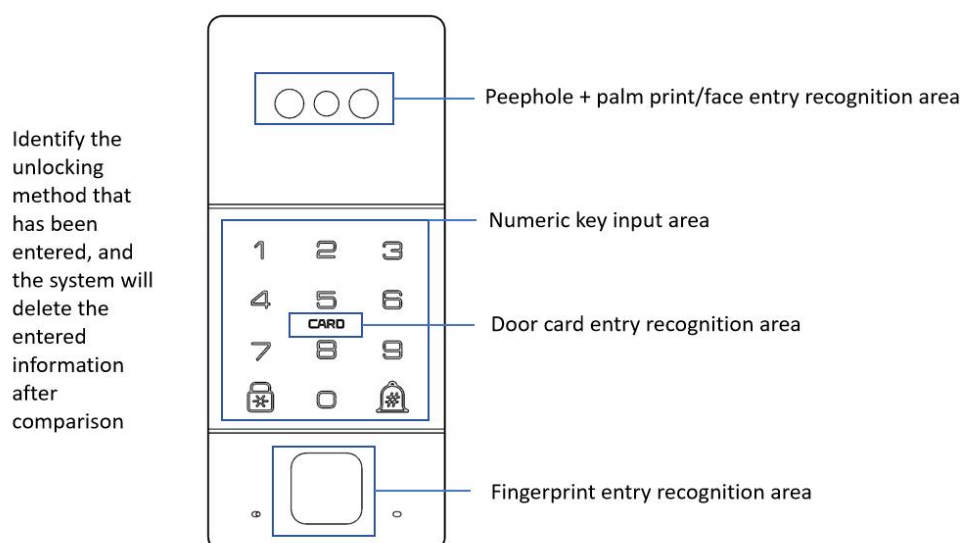
4.2.2.(a) Delete by number

The system will prompt: "1-Delete by number," "2-Verify user to delete," or "3-Delete all" Select "1-Delete by number" to delete the unlocking method according to the number of the unlocking method previously entered.



4.2.2.(b) Verify user deletion

The system will prompt: "1-Delete by number," "2-Verify user to delete," or "3-Delete all" Select "2-Verify user to delete", identify the unlocking method that has been entered on the panel and delete it.



4.2.2.(c) Delete All

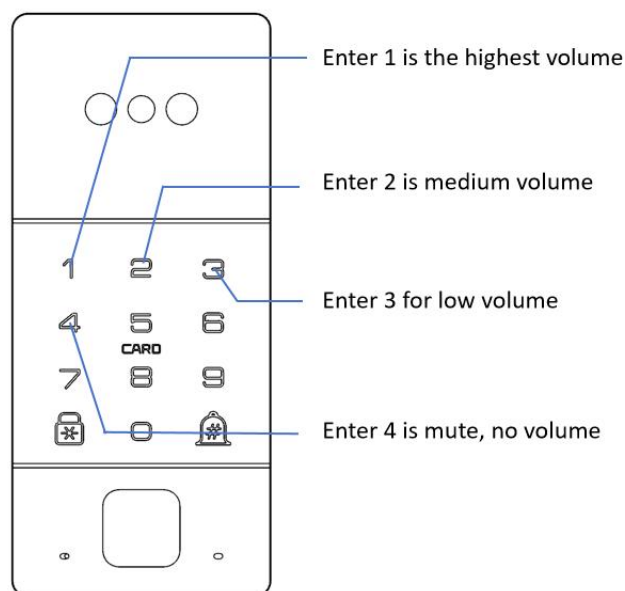
The system will prompt: "1-Delete by number," "2-Verify user to delete," or "3-Delete all." Select "3-Delete all", and the system will delete all users. (Except the administrator password set for the first time.)

4.3 Function settings

After entering the local settings, wait for the voice broadcast "1-Add user", "2-Delete user", "3-System settings" and then enter 3 to prompt "1-Function settings", "2-Function switch", "3-Restore factory settings", and enter 1 to enter the function settings and then broadcast "1-Volume settings" and "2-Lock mode settings".

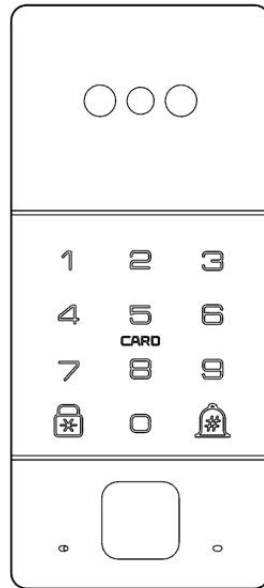
4.3.1 Volume Settings

After "1-Volume Setting" and "2-Lock Mode Setting", "1-High Volume", "2-Medium Volume", "3-Low Volume" and "4-Mute" will be announced. Select the volume you need.



4.3.2 Unlock mode setting

After "1-Volume Setting" and "2-Unlocking Mode Setting", "1-Single Unlocking" and "2-Combination Unlocking" will be broadcasted. Select the desired unlocking method (Single Unlocking: All users only need to identify the correct unlocking method once to unlock
Combination Unlocking: Except for the administrator who starts the setting, the rest of the unlocking methods need to be successfully identified with 2 types of unlocking methods before unlocking.)



Single unlocking: All unlocking methods can be unlocked as long as one correct unlocking method is used to successfully unlock the lock.

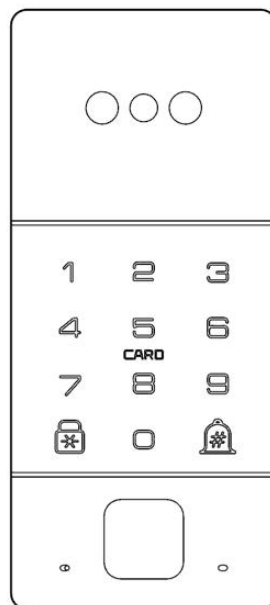
Combination unlocking: In addition to the administrator password set at the beginning, you need to use 2 correct unlocking methods to successfully unlock the lock.
Column: Password unlocking + fingerprint unlocking

4.4 Function switch

After entering the local settings, wait for the voice broadcast "1-Add user", "2-Delete user", "3-System settings" and then enter 3 to prompt "1-Function settings", "2-Function switch", "3-Restore factory settings", and enter 2 to enter the function switch and then broadcast "1-Normal open mode settings" and "2-Human body sensor switch".

4.4.1 Normally open mode setting

Announce "1-Normal Open Mode Setting" and "2-Human Body Sensor Switch". Enter 1 to enter the Normal Open Mode Setting and then announce "1-Enable Normal Open" and "2-Disable Normal Open". Enable Normal Open: All unlocking methods can unlock (including unlocking methods that have not been recorded). Disable Normal Open: Only the unlocking methods that have been recorded can be used to unlock.



Normally open mode - open: All unlocking methods can be unlocked, including the start method that is not recorded

Normally open mode - Close: Only the entered start method can unlock

4.4.2 Motion sensor switch (radar-based)

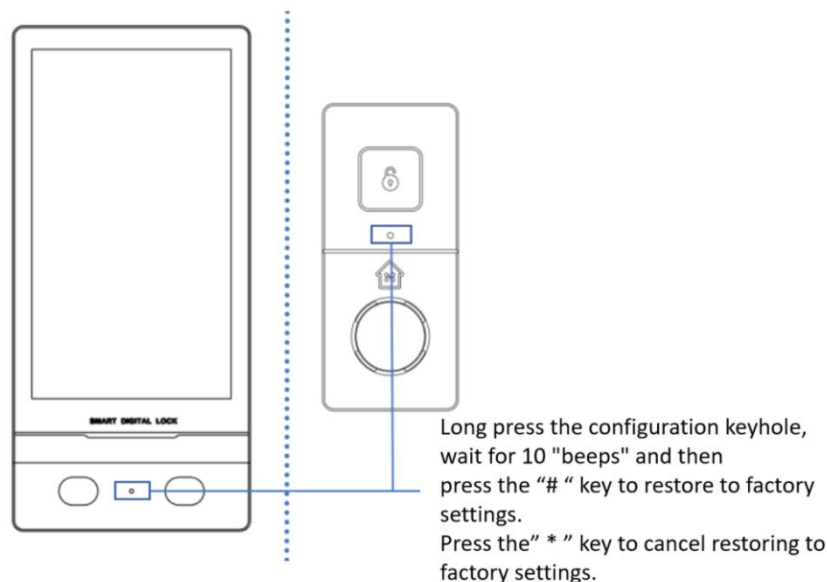
Broadcast "1-normal open mode setting" "2-human body induction switch" input 2 to enter the human body induction switch and then broadcast "1-open" "2-close".

4.4.3 Restore factory settings

After entering the local settings, wait for the voice broadcast "1-Add user", "2-Delete user", "3-System settings" and then enter 3, and then it will prompt "1-Function settings", "2-Function switch", "3-Restore factory settings". Enter 3 to enter the factory settings, press the "#" key to confirm, and the system will be restored to the original state before binding.

Reset the device to factory settings

To quickly restore factory settings, long press the configuration key and wait for 10 "beeps". The device will prompt "Please press the "#" key to confirm the factory settings. Press the * key to return". Press the # key to restore. If you do not need, press the * key.



5. Notes

To ensure optimal performance and extend the service life of the device, please strictly abide by the following regulations:

5.1 Power Connection Specifications

Adapter Matching Standard

- ▶ DC05-1 (8.4V) : Specially matched serial port lock body
- ▶ DC05-5 (12V/3A&6A) : Suitable for 24Ω European standard lock body/YuTismt's B65/A65 series

Key Installation Requirements

- ✓ Grounding Protection

The ground wire must be connected to ensure stable operation of the system. (Damage caused by failure to ground is not covered by the warranty)

✓ Distance Limit

- The adapter should be installed indoors within 2 meters of the door lock
- WiFi distance limit $\leq 5\text{M}$ without obstruction
- If the wiring needs to be extended, only low-impedance cables with a cross-sectional area equal to or greater than 1.5 mm^2 shall be used

✓ Environmental Requirements

Do not install in the following locations:

✗ Ceiling mezzanine ✗ Wooden cabinets ✗ Wet areas

5.2 Installation Environment Requirements

- Only for interior doors/entrance doors
- Do not expose to outdoor or direct sunlight (Will void the warranty)
- The recommended installation height for face recognition models is $1.2\text{ meters} \pm 5\text{ cm}$

5.3 Installation Process Warning



Order of Operations

The communication cable between the inner and outer panels must be connected before the power cable is plugged in. (Incorrect sequence may damage the circuitry)



Voltage Range

Only supports 8-12V DC (Other voltages need to contact certified dealers in advance)

5.4 Summary of Warranty Terms



Warranty Range

- Within 1 year from the date of receipt, the performance problems listed in the "Product Fault Table" can be repaired free of charge
- Original parts must be used



Disclaimer

The following situations require paid repairs:

- Not operating according to the instructions
- Disassemble the product yourself
- Contact with corrosive liquids (Such as gasoline, disinfectants, etc.)
- Water immersion or mechanical damage

5.5 Daily Maintenance Guide



Cleaning and Maintenance

- Wipe only with a slightly damp soft cloth
- Disable chemical cleaning agents on fingerprint reader



Safety Tips

- System setup immediately after installation
- The administrator password must be kept confidential
- If you lose your key card, you should reset the entire system

Important Notice

This product complies with international safety standards. The specific warranty policy is subject to the laws and regulations of the place of purchase. The company is not responsible for any losses caused by ignoring these precautions.

Product warranty card

Product Model			
Installation Date		Purchase Date	
Customer Phone		Customer Name	
Customer Address			
Point of sale			

Thank you for choosing our product.

1. Warranty Coverage

The warranty period is one (1) year from the date of purchase.

During this period, if the product malfunctions due to manufacturing defects (non-human damage or improper use), we will provide free repair or replacement of defective parts.

2. Required Documents for Warranty Service

Please present this warranty card and the original purchase invoice/receipt when requesting repairs.

Note: This warranty card is non-replaceable if lost. Please keep it in a safe place.

3. Non-Warranty Cases

The warranty does not cover:

Damage caused by accidents, misuse, or unauthorized modifications.

Malfunctions due to failure to follow the user manual instructions.

4. After-Sales Support

If you encounter any issues with the product, please contact the retailer where you made the purchase for assistance.

Fault Description: